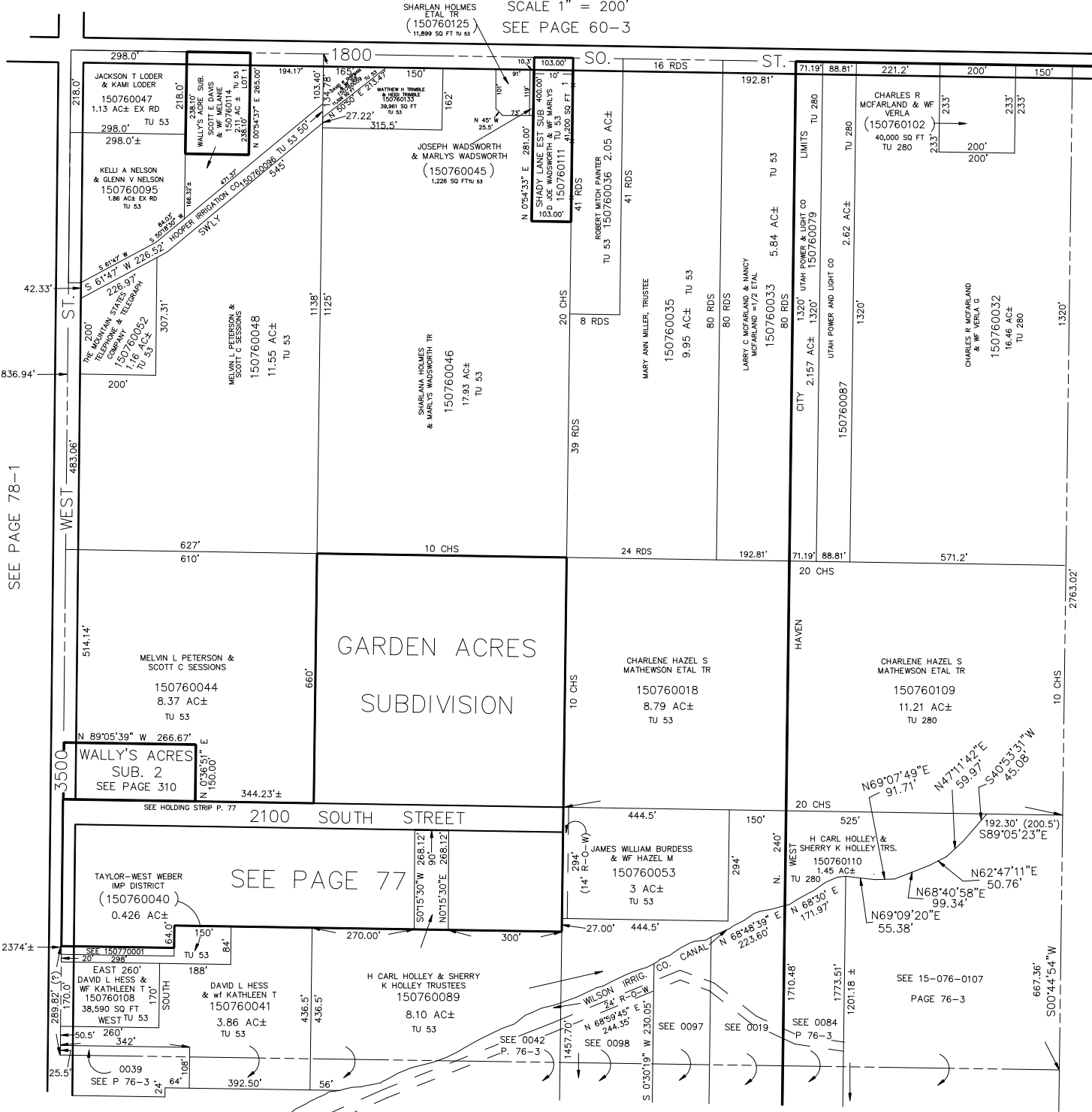


# NW 1/4 SECTION 27, T.6N., R.2W., S.L.B. & M.

TAXING UNITS: 53, 280

IN WEST HAVEN CITY & WEBER COUNTY

SCALE 1" = 200'  
SEE PAGE 60-3



SEE PAGE 78-1

SEE PAGE 76-1

SEE PAGE 77

SEE PAGE 76-3

SEE 15-076-0107  
PAGE 76-3